
Seika v3Pro
Seika v5
Seika 80
Braille Display

User's Manual
Version 4.0

Preface

Thank you very much for purchasing Seika Braille Display.

The Seika Braille display provides a tactile interface to your computer.



Before using the Seika Braille display, please read this user manual.

If you have additional questions about using the Seika Braille display, please contact distributors by e-mail, letter, fax, or telephone.

NOTE: Contents and specifications are subject to change without prior notice.

Safety Precautions:

This User's manual describes safety precautions according to the following level and marks of warning.

Warning mark	Mark to Prohibit	Procedures
		
Warning Caution	Actions Prohibited	Disconnect the power plug



[Warning]

This precaution must be followed, or it could cause of fire or electric shock which could result in serious injuries or death.



[Caution]

This precaution must be followed, or it may cause of electric shock and/or any other accidents which may result in injuries and/or partial damage of the products or surrounding equipment.

- Unauthorized reproduction of this document, in whole or in part, is strictly prohibited.
- Modifications to the contents of this document for improvements or revisions may be made without prior notification.
- Product liability is limited within the country of original purchase.

Table of Contents

Quick Installation Guide	1
Chapter 1 - Overall description of the Seika Braille display	2
1. Name and Functions of All Components	2
1.1 Overall Illustration of the Product	2
1.2 Description of the right side.....	3
1.3 Description of the left side	4
2. Working Modes	4
Chapter 2 - Setup	5
1. Service Precautions.....	5
2. Installation Space.....	5
3. Operating Environment.....	6
4. Precautions for Moving	6
Chapter 3 - Seika Braille Display Driver for Windows OS	7
Chapter 4 - Configuring the Bluetooth Connection (only for Seika v5)	8
Chapter 5 - Using Seika Braille display with JAWS	9
1. Installing Seika Patch for JAWS.....	9
2. Working in JAWS.....	9
2.1 Configuring JAWS.....	9
2.2 Navigation and control keys function	12
3. Uninstalling the patch of JAWS	14
Chapter 6 - Using Seika Braille display with Window-Eyes.....	15
1. Working in Window-Eyes	15
2. Navigation and Control keys function	17
Chapter 7 - Using Seika Braille display with SuperNova	19
1. Working in SuperNova	19
2. Navigation and Control keys function	23

Chapter 8 - Using Seika Braille display with COBRA	24
1. Configuring COBRA	24
2. Navigation and Control keys function	25
Chapter 9 - Using Seika Braille display with NVDA	27
1. Configuring NVDA	27
2. Navigation and Control keys function	27
Chapter 10 - Using Seika v5 with VoiceOver (Aside).....	28
1. Using VoiceOver (Aside) on the iPad and iPhone (Seika v5 only)	28
2 Using Seika Braille display in the macOS through USB cable	29
3 Using Seika Braille notetaker in the macOS through Bluetooth (Seika v5 only)	29
4. Navigation keys and commands	30
Chapter 11 - Read USB Flash Disk (only for Seika v5).....	31
1. Quick Start	31
2. Control keys	32
2.1. File Selection	32
2.2. File Reading	32
2.3 check battery level	33
2.4 Quit	33
3. Beeps Alarm	33
4. Sleep mode.....	34
Q&A	35
1. How to verify which Virtual COM port has been used by Seika Braille Display	35
2. How to uninstall the Seika Braille display driver	35
3. Braille display doesn't work.....	35
3.1 Check Seika Braille display driver.....	35
3.2 Check the screen reader configuration.....	36

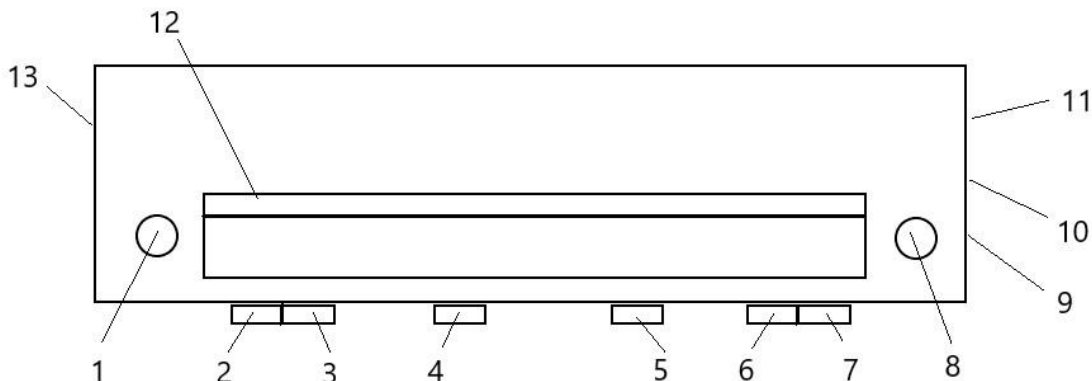
Quick Installation Guide

- The below steps assume that you have installed the screen reader in their default locations.
- Install Seika Braille display Windows OS driver (refer to Chapter 3).
- Install the Seika patch program and configure your screen reader (refer to Chapter 5 for Jaws, Chapter 6 for Window-eyes, Chapter 7 for HAL and Supernova, Chapter 8 for COBRA, Chapter 9 for NVDA, Chapter 10 for Apple iOS and MAC).
- USB flash disk reading mode of Seika v5, please refer to Chapter 11.

Chapter 1 - Overall description of the Seika Braille display

1. Name and Functions of All Components

1.1 Overall Illustration of the Product



1~8---Navigation and Control Keys, 9---Power Switch (Seika v5 only), 10---USB Host port (Seika v5 only), 11--- USB slave port (Seika v5 only), 12--- Cursor Routing Buttons, 13--- DC IN socket (Seika v5 only)

Seika Braille Display's size:

Seika v3pro weight is 1.3 lbs. with dimensions of 13(W) x 3.6(D) x 1(H) inches.

Seika v5 weight is 1.4 lbs. with dimensions of 13(W) x 3.6(D) x 1(H) inches.

Seika 80 weight is 3.3 lbs. with dimensions of 23(W) x 3.5(D) x 0.8(H) inches.

Braille Display:

There are 40 refreshable Braille cells (8 dots) in Seika v3pro and Seika v5. And there are 80 refreshable Braille cells (8 dots) in Seika 80.



[Caution] Please touch the Braille cell with clean finger, otherwise the dust will block the pins.

Cell Position Mark:

It marks the cell position. There will be a position mark per five cells. From left to right each position mark shows the current cell is the fifth cell, tenth cell, fifteenth cell, and so on.

Navigation and Control Keys

Place the Seika Braille Display on a flat surface with the Braille display facing upwards and the buttons facing towards you.

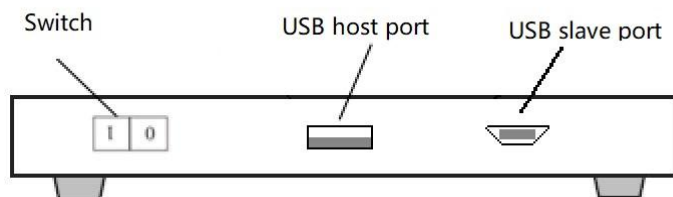
Top surface keys are located on the top of the Seika Braille Display:

- Behind the Braille cells are the cursor routing buttons. These tiny buttons are used to move the computer's cursor directly to a particular location on the screen.
- Near each end of the Braille display is a small round button. The K1 is to the left and the K8 is to the right.

Front panel navigation keys are located on the front edge, facing the user:

- On the left half of the front panel is the LEFT CTRL which contains K2 and K3.
- In the middle of the front panel are two buttons. The K4 is toward the left and the K5 is toward the right.
- On the right half of the front panel is the RIGHT CTRL which contains K6 and K7.

1.2 Description of the right side



Power Switch (Seika v5 only)

On the right side of the display, there is the ON/OFF switch. Push the front side to turn on the display and push the rear side to turn off the display.

NOTE: please turn off the Seika v5 if you do not use it.

USB host port (Seika v5 only)

On the right side of the Braille display, there is a rectangle USB port. You could plug in a USB flash disk and read the files in it. Please refer to the Chapter 10 for more details.

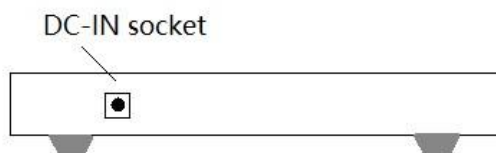
USB slave port

On the right side of the display, there is a USB slave socket which is used for connecting with the computer through a USB cable.



[Caution]: When a laptop computer is used for operating the Braille display, please make sure that it is supplied with power via the electrical cable rather than battery. Otherwise it may cause a deficiency in the power supply.

1.3 Description of the left side



DC-IN socket (Seika v5 only)

On the left side of the display, there is a 3.5 mm, 5v, DC-IN socket, with center pin positive. You can plug the cord from the AC power adapter into the DC IN socket for charging the Seika v5 embedded battery.

2. Working Modes

- USB cable mode: Seika Braille display works with screen reader through USB cable.
- Bluetooth mode: Seika v5 can work with screen reader wirelessly through Bluetooth.
- Reading flash disk mode: Seika v5 can display the content in the USB flash disk.

Chapter 2 - Setup

1. Service Precautions



[Prohibited]: Avoid using the display in the following conditions, which may cause malfunctions.

- Direct sunlight, near air conditioners or outside.
- High humidity, such as those near a water supply or humidifier, or any place with water, oil, or chemicals.
- Avoid contact with dust, waste particles, near open windows, or locations with any toxic gases or iron powder.



[Caution] Please touch the Braille cells with clean finger, otherwise the dust will block the pins.

Also, do not install the display near any televisions, radios, speakers, short-wave radios, or anything that is magnetic or emits radio waves. If you use it adjacent to any of these items, it can interfere with reception.

2. Installation Space



[Caution] Install the product in a location which meets the following criteria:

- The product must be installed on a level surface.
- It is recommended to avoid putting anything heavier than a keyboard or a laptop computer or similar on top of the device as it may cause malfunction.

3. Operating Environment

- Temperature: 41 - 95 °F (5 - 35 °C)
- Humidity: 20 - 80% (no condensation)

4. Precautions for Moving



[Warning]

- Violent shaking or vibrations at the time of moving may cause product failures.



[Requirement]

- Turn off the computer which is connected with the Seika Braille display, and disconnect the USB cable, then you can move the Seika Braille display.

Chapter 3 - Seika Braille Display Driver for Windows OS

You can connect the Seika Braille display to your computer through USB port after you install the driver for Windows OS.

Installing Seika Braille display driver:

- If your Windows OS is 64bit, please run "CP210xVCPInstaller_x64.exe", otherwise if your Windows OS is 32bit, please run "CP210xVCPInstaller_x86.exe " in the "Seika braille display driver" folder in the CD.
- Select "Install" to install Seika Braille display driver.
- When prompted "Installation Successful", press ENTER.
- Follow the instruction and restart your computer.
- Now, the Seika braille display driver is installed successfully.
- Connect Seika Braille display with your computer by USB cable (if you use Seika v5, you need switch on the Seika v5), the Seika Braille display will beep twice which means Seika Braille display already be connected with your computer successfully.

NOTE:

Before install Seika Braille display driver, make sure that Seika Braille display is not connected to your computer.

Chapter 4 - Configuring the Bluetooth Connection (only for Seika v5)

Bluetooth is a short-range wireless communications technology. Seika v5 with Bluetooth capability can communicate with computer over a distance of about 10 meters (30 feet) without requiring a USB cable.

In order to use Seika v5 through Bluetooth, you need establish a partnership with a Bluetooth enabled computer. The majority of laptops offer built-in Bluetooth support. If your computer does not have built-in Bluetooth, you need plug in an external USB Bluetooth dongle and install the appropriate drivers on your computer.

Here are instructions for setting up the Bluetooth connection between the Seika v5 and computer.

- Do not connect the USB cable to the computer (you can use the USB cable and power adapter for charging the Seika v5)
- Switch on the Seika v5. It beeps once, and it displays the firmware version information and Bluetooth name.
- Make sure that Bluetooth is enabled on the computer. If you are using an external USB Bluetooth adapter, insert it into your computer.
- Open Bluetooth control software, and search for Bluetooth devices. It will take several seconds. When the search is complete, the Seika v5 Bluetooth name TS5**** is in the list of devices.
- Select TS5 from the list. If the computer doesn't find the Seika v5, please make sure you turn on the Seika v5, and then search again.
- In the Bluetooth pin passkey edit field, type pin code "0000".
- After a few seconds, you will receive a message that the Bluetooth device was successfully connected and the outgoing and incoming COM port assignments are displayed. Make a note of the outgoing port number as this is the port the screen reader will use to communicate with the Seika v5.

Now please configure your screen reader to use the Bluetooth COM port.

Chapter 5 - Using Seika Braille display with JAWS

(For JAWS version 10.0.1154 and later)

NOTE:

The below steps assume that you have already installed Seika Braille display driver and Jaws version 10.0.1154 or later. If you have not installed Seika driver, please refer to Chapter3.

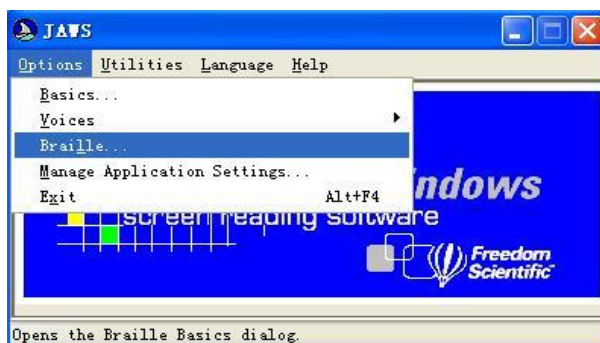
1. Installing Seika Patch for JAWS

- Open the "Seika patch for JAWS" folder in the CD. Run the Seika Patch for JAWS according to your Windows operating system.
- Install the patch by default steps. The Seika Patch for JAWS will be installed by the JAWS Utility automatically. A console window appears and it will take several minutes.

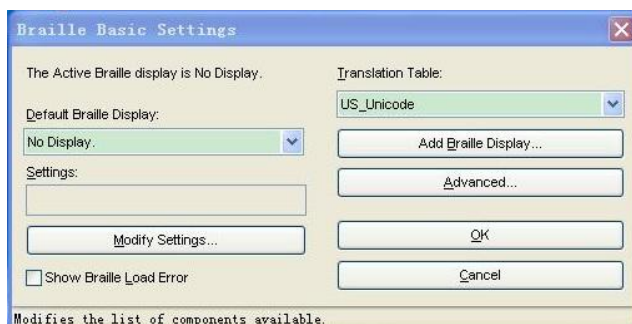
2. Working in JAWS

2.1 Configuring JAWS

- Connect the Seika Braille display with your computer by USB cable.
- Start JAWS and select "Braille..." in the "Options" menu.



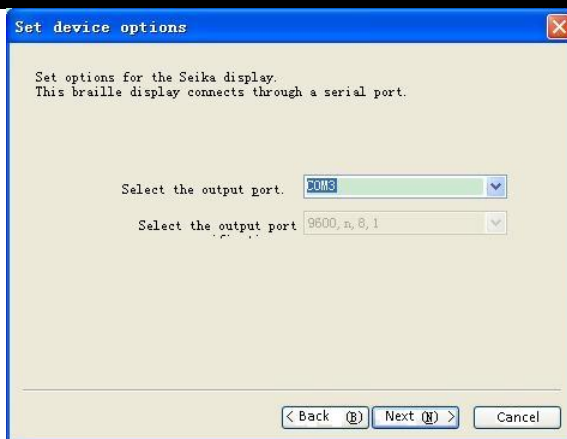
- Assuming that the default Braille display is set to "No display", tab to the "Add Braille Display" button and press enter.



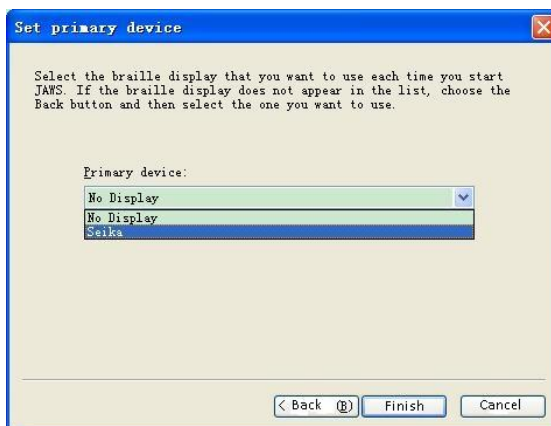
- In the "Select components" dialog box, there is a list of Braille displays. Select the "Seika" by pressing the space bar.



- Tab to the "Next" button and press enter.
- If you connected Seika Braille display with your computer by USB cable, the output port will be set automatically, it does not need change. If you connect Seika v5 to your computer using Bluetooth, in the "Set device options" dialog box, select the output port that corresponds to the COM port number that you make the note in chapter 4.



- Tab to the "Next" button and press enter.
- When prompted to set the primary device, select "Seika" in the "Primary device" list.



- Tab to the "Finish" button and press enter.
- In the "Braille Basic Settings" dialog box, tab to the "OK" button and press it.



- Restart the JAWS and the Seika Braille Display will work now.

NOTE: if the Seika Braille display could not work with Jaws, please check the setting of output port in Jaws by the following steps.

Run the "Detect Seika COM Port V1.0.exe" in the "tool" folder in the CD; remember the Seika COM port number.

In the "Braille Basic Settings" dialog box, press the button of "Modify Settings...". In the "set device options" dialog box, you can manually select the output port which you remember.

2.2 Navigation and control keys function

Braille Commands:

Description	Command
Braille Mode Toggle	K1 + K8
Attribute/Character mode toggle	K2 + K6
Adjust Braille Option Dialog	K2 + K4
Attribute Marking Off	K1 + K2 + K4
Braille Marking Off	K1 + K2 + K4
8-Dot/6-Dot Toggle	K5 + K4 + K7
8 Pixels/Unlimited Pixels Per Space	K4 + K5 + K6
Repeat Last Flash Message	K2 + K7

Language	K1+K2+K3
Set Language	K1 Or K8

Navigation Commands:

Description	Command
Auto Advance Mode	K3 + K6
Increase Auto Advance Speed	K1 + K5
Decrease Auto Advance Speed	K1 + K4
Top Of Window	K2
Bottom Of Window	K3
Pan Left	K1
Pan Right	K8
Braille Next Line	K6
Braille Prior Line	K7
PAGE DOWN (Active Cursor)	K3 + K5
PAGE UP (Active Cursor)	K2 + K5
TAB	K4 + K6
CTRL+TAB	K3 + K8
SHIFT+TAB	K4 + K7
CTRL+SHIFT+TAB	K2 + K8

Cursor Commands:

Description	Command
Braille follows Active	K4
Active follows Braille	K4 + K5
Route Braille To Active	K5
Screen Reader Cursor	K8 + K6
Mouse Button Right Click	K4 + K8
PC Cursor	K8 + K7

Route Screen Reader to PC Cursor

K5 + K7

Route PC to Screen Reader Cursor

K5 + K6

Select Text

Any Cursor Routing Button + K5

3. Uninstalling the patch of JAWS

NOTE:

Uninstall the patch of JAWS will disable the Seika Braille Display work with JAWS and delete all the patch files.

You must uninstall this patch before uninstall the JAWS.

Open the "Add or Remove Programs" in the "Control Panel", and select the item:

"Seika Patch for JAWS Vx.y". Uninstall the "Seika Patch for JAWS Vx.y" step by step.

The uninstall will taking several minutes. After this uninstall process is finished, please restart your computer.

Chapter 6 - Using Seika Braille display with Window-Eyes

NOTE:

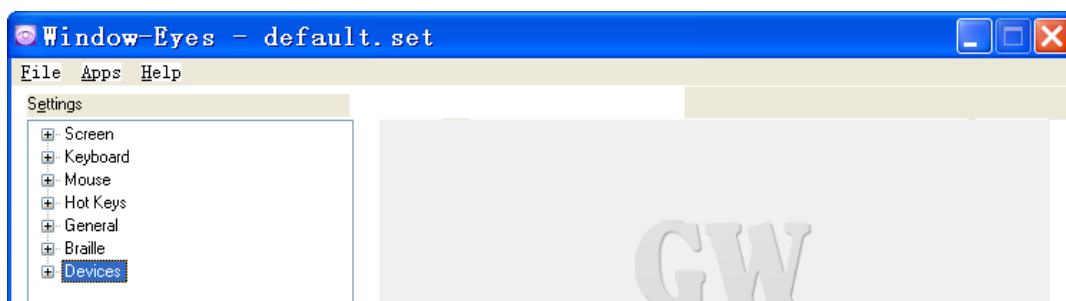
The below steps assume that you have already installed Seika Braille display driver and Window-eyes version. If you have not installed Seika Braille display driver, please refer to Chapter3.

1. Working in Window-Eyes

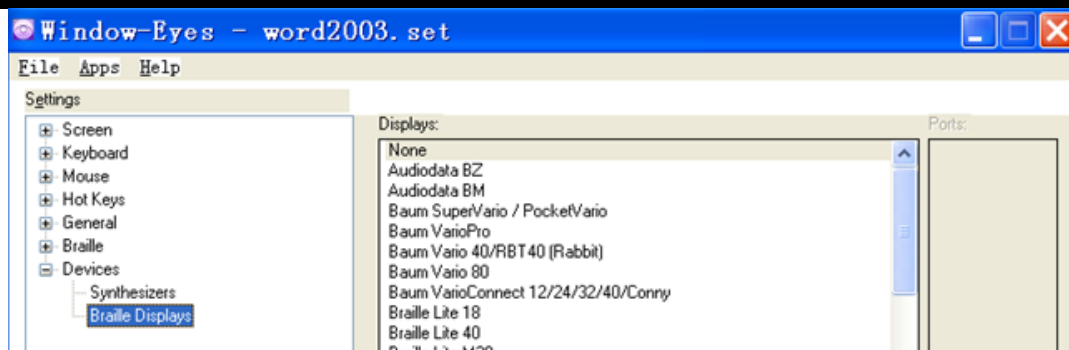
- Connect the Seika Braille display with your computer by USB cable. If you use Seika v5, you need switch on the Seika v5. Run the "Detect Seika COM Port V1.0.exe" in the "tool" folder in the CD, remember the Seika COM port number.

If you connect Seika v5 to your computer using Bluetooth, in the "Set device options" dialog box, select the output port that corresponds to the COM port number that you make the note in chapter 4.

- Start Window-eyes and select "Device" in the "Settings" list.

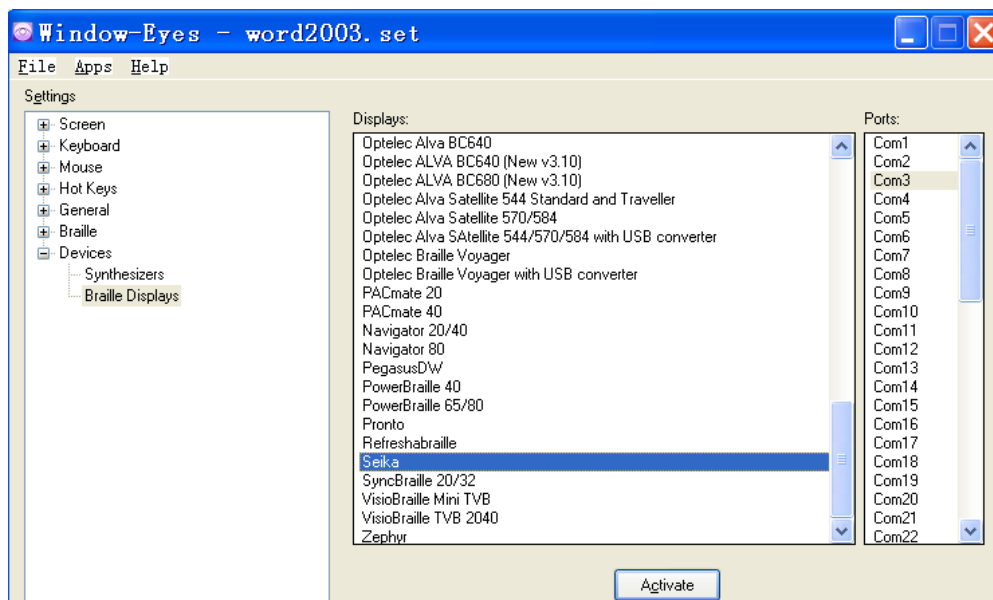


- Select "Braille Display" in the "Device" list.

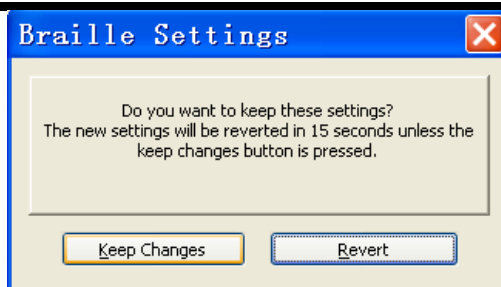


- In "Displays" option, select "Seika" option.
- In "Ports" option, if you connect Seika Braille display to your computer using USB, select the Seika COM port number which you remember.

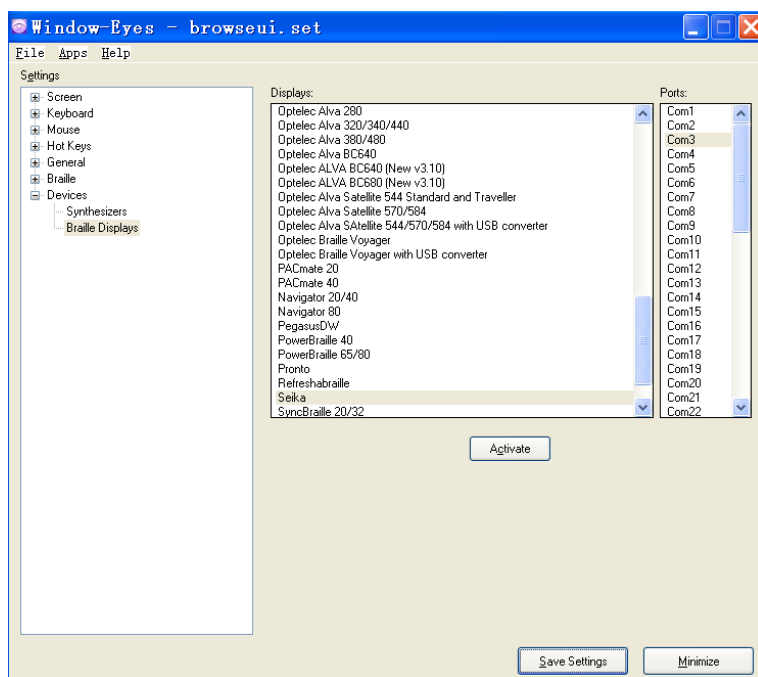
If you connect Seika v5 to your computer using Bluetooth, select the Seika COM port number that you make the note in chapter 4.



- Tab to the "Activate" button and press Enter.
- Select "Keep Changes" button in the "Braille Settings" dialog box, then press Enter.



- Tab to "Save Settings" button and press Enter.



2. Navigation and Control keys function

Description	Key Press
Scroll Braille Left	K1
Scroll Braille Right	K8
Prior Braille Line	K2
Next Braille Line	K3
Top Line	K6
Bottom Line	K7

Mouse Top Left	K1 + K2
Mouse Bottom Left	K1 + K3
Mouse Top Right	K6 + K8
Mouse bottom right	K7 + K8
To Focus	K1 + K8
Grade 2 Braille Toggle	K4 + K5
Untranslate At Cursor	K4 + K6
Untranslate At Mouse	K4 + K7
Scroll Mode Toggle	K2 + K6
Spacing Toggle	K3 + K7
Attributes To Show Rotor	K2 + K5
Show Attributes Toggle	K3 + K5
Quick Message Rotor	K3 + K6
Display Individual Attribute Rotor	K2 + K4
Braille graphic mode	K3 + K4
Toggle 6/8 Braille	K5
Braille tracking toggle	K4

Chapter 7 - Using Seika Braille display with SuperNova

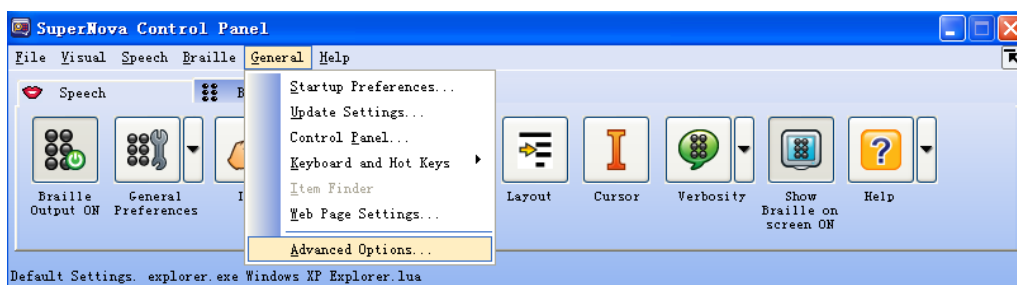
NOTE: The below steps assume that you have already install Seika Braille display driver and SuperNova. If you have not installed Seika Braille display driver, please refer to Chapter3.

1. Working in SuperNova

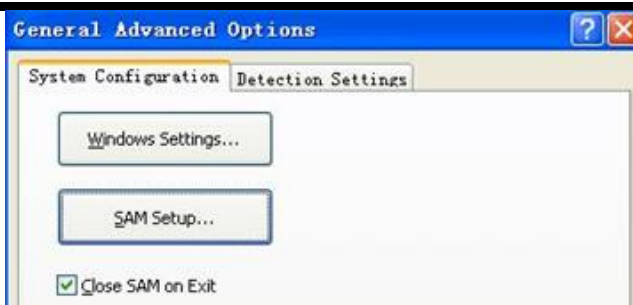
- Connect the Seika Braille display with your computer by USB cable. If you use Seika v5, you need switch on the Seika v5. Run the "Detect Seika COM Port V1.0.exe" in the "tool" folder in the CD, remember the Seika COM port number.

If you connect Seika v5 to your computer using Bluetooth, in the "Set device options" dialog box, select the output port that corresponds to the COM port number that you make the note in chapter 4.

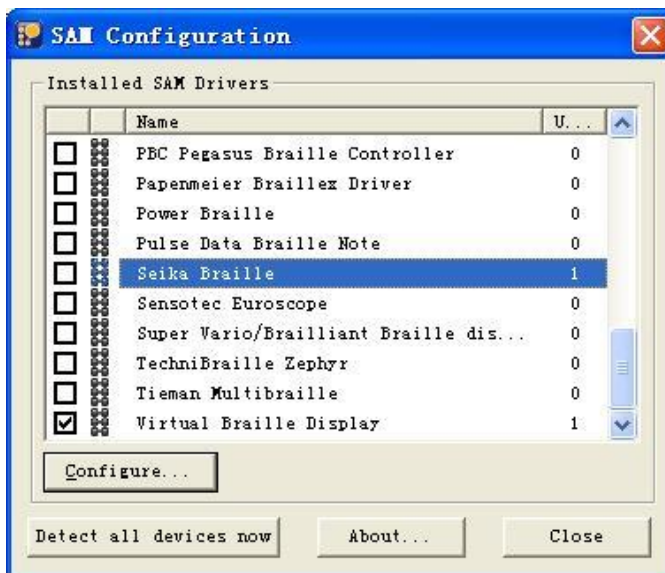
- Run SuperNova.
- On the "SuperNova Control Panel", select "Advanced Options..." from the menu item "General".



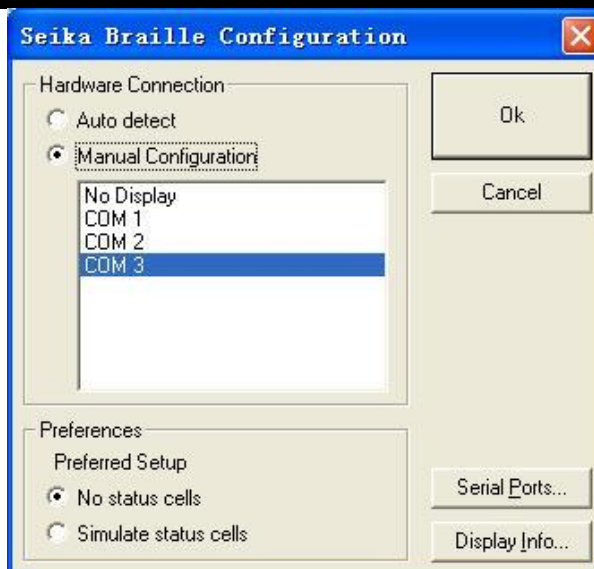
- Select "System Configuration" tab, tab to "SAM Setup..." and press enter.



- Check the "Seika Braille" item on the "SAM Configuration" dialog box. Tab to the "Configure..." button and press enter.

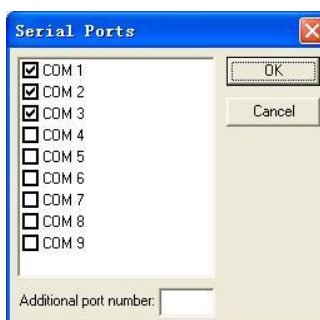


- Select the "Manual Configuration" radio button, tab to the "Serial Ports..." button and press enter.

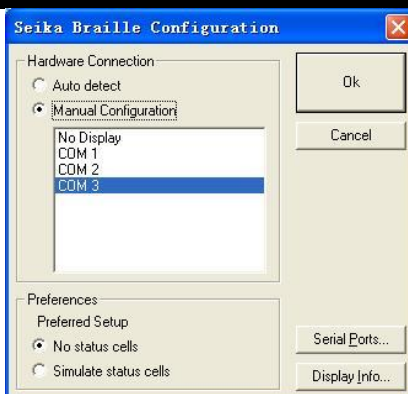


- In the list of COM ports, if you connect Seika v5 to your computer using USB, select the Seika COM port number which you remember and press "OK" button.

If you connect Seika v5 to your computer using Bluetooth, select the port that corresponds to the COM port number that you make the note in chapter 4.



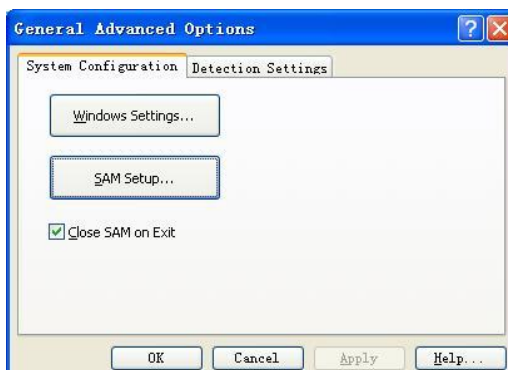
- In the "Seika Braille Configuration" dialog box, select the serial port you have just checked and tab to the "OK" button and press.



- In the "SAM Configuration" dialog box, the unit of the Seika Braille is 1. The Seika Braille connects to the Supernova is successful. Tab to the "Close" button and press enter.



- Tab to the "OK" button and press enter in the "General Advanced Options" dialog box.



- Restart your SuperNova and Seika Braille display will work now.

2. Navigation and Control keys function

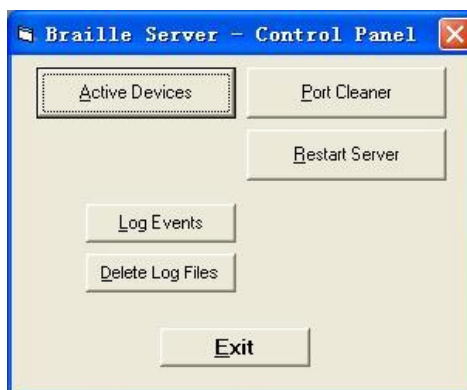
Action	Key press
Braille Back	K1
Braille Forward	K8
Braille Line up	K7
Braille Line down	K6
Braille Go To Focus	K4
Braille Line Start	K1 + K7
Braille Line End	K1 + K6
Braille Top	K1 + K2
Braille Bottom	K1 + K3
Braille Cell Left	K7 + K8
Braille Cell Right	K6 + K8
Braille Physical/Logical Mode	K2 + K7
Braille Cycle Attributes	K2
Braille Describe Character on off	K3
Braille Output On Off	K3 + K6
Braille tracking on off	K5

Chapter 8 - Using Seika Braille display with COBRA

NOTE: The below steps assume that you have already install COBRA and Seika Braille display driver. If you have not installed Seika Braille display driver, please refer to Chapter3.

1. Configuring COBRA

- Connect the Seika Braille display with your computer by USB cable. If you use Seika v5, you need switch on the Seika v5. Run the "Detect Seika COM Port V1.0.exe" in the "tool" folder in the CD, remember the Seika COM port number.
- Start COBRA by pressing left CTRL+ALT+Shift+F7.
- From the Start Menu, select Programs, BAUM Retec, Braille Server, then "Control Panel".



- Select "Active devices".



- Click on "Add device".



Select the desired display from the list and type the port to which you remember.

- Click on "OK" to reboot the Braille Server.
- Please also reboot COBRA, so that it can recognize the new Braille display.
- Start COBRA by pressing left CTRL+ALT+Shift+F7 again. This combination must be held for at least one second.

2. Navigation and Control keys function

Action	Key press
Scroll left	K1
Scroll right	K8
Previous item or up screen	K2
Next item or down screen	K3
Shift + Tab	K7
Tab	K6

Move navigation to focus	K4
Focus is in element mode	K1 + K2
Focus is in line mode	K1 + K3
Navigation is in line mode	K1 + K6
Navigation in element mode	K1 + K7
Move navigation to the top	K2 + K7
Move navigation to the bottom	K3 + K6
Escape	K2 + K8
Enter	K3 + K8

Chapter 9 - Using Seika Braille display with NVDA

1. Configuring NVDA

Please install NVDA_2019.3 or later version firstly.

- Start NVDA
- Unzip "Seika v3v5v80 addon for NADA v1.0.zip" and double click the "Seika v3v5v80 addon for NADA v1.0.nvda-addon" and wait for the installation finished.
- Restart NVDA after the patch is installed successfully.
- Connect the Seika Braille display with your computer by USB cable. If you use Seika v5, you need switch on the Seika v5.
- Press "NVDA+n" to pop up the NVDA menu and then select the "Preferences->Settings...".
- Select the "Braille" category and press "Change" button.
- Select the "Seika Braille V3/5/80" in the "Braille display" item and press "OK" button.

Now, the Seika Braille display can work with NVDA.

2. Navigation and Control keys function

Description	Key Press
Scroll Braille Left	K1
Scroll Braille Right	K8
Braille Prior Line	K2
Braille Next Line	K3

Chapter 10 - Using Seika v5 with VoiceOver (Aside)

1. Using VoiceOver (Aside) on the iPad and iPhone (Seika v5 only)

Do not connect the USB cable with your computer (you can use the USB cable and power adapter for charging the Seika v5). Turn on the Seika v5, it will beep once, and it displays the firmware version information and Bluetooth name.

Make sure your iPhone Bluetooth is turned off.

Enable the Voice Over (Aside) by the following steps: iPhone Settings - General - Accessibility (Auxiliary) - VoiceOver (Aside).

Enable the Braille by the following steps: VoiceOver (Aside) - Braille. When you are asked whether open Bluetooth or not, please select open Bluetooth, then iPhone will search the Seika v5, and it will take about one minutes. When iPhone find the Seika v5 and display Bluetooth name TS5 *****, you need double click this item and input the pin code 0000 to set up the connection.

If the iPhone or iPad is sleep or out of range, or you restart the Seika v5, the connection maybe broken. You can double click the TS5 ***** in VoiceOver (Aside) -Braille-Choose a braille display and set up the connection again.

If you would like to switch two iOS devices connection with the Seika v5, you can make one iOS device sleep and the Seika v5 will wait connection. Then you can start the other iOS device and double click the TS5 ***** in VoiceOver (Aside)-Braille-Choose a braille display, the connection will be set up with this iOS device.

By default, VoiceOver (Aside) displays uncontracted, eight-dot braille. In this mode, VoiceOver (Aside) automatically translates each character and digital you type on your braille display into braille output, as you type it. You can turn off eight-dot braille to use uncontracted, six-dot braille instead. In this mode, VoiceOver (Aside) automatically translates each word you type on your braille display into braille output, after it determines you've completed a word or you press the Space bar on your braille display.

NOTE: Once you set up connection between iOS and your Seika v5, the iOS will record this Seika v5 device. In the future maybe you meet connection problem between iOS and your Seika v5, don't worry about it. You should find this Seika v5 device which named TS5 ** (which means the Bluetooth serial number of this Seika v5) in the Braille-Select braille display list, then click it, and you need select "Ignore this device" item to remove this Seika v5 from iOS record. After that, you should repeat the set up connection steps as above.**

2 Using Seika Braille display in the macOS through USB cable

Connect Seika Braille display with your computer through USB cable. If you use Seika v5, you need switch on the Seika v5.

Launch Aside, then the Seika Braille display can work in macOS.

3 Using Seika Braille notetaker in the macOS through Bluetooth (Seika v5 only)

Do not connect the USB cable with your computer (you can use the USB cable and power adapter for charging the Seika Braille notetaker).

Turn on the Seika v5.

Open Aside Utility, and select "+" (which means add new device) button in the "Braille display" menu.

The Seika v5 Bluetooth name will appear in the list of Braille devices. Its name will begin with TS5 in the list of devices.

Click the device name to select it, and initiate the pairing. You will be taken to a passcode entry screen, enter the passcode 0000.

Launch Aside, then the Seika Braille notetaker can be used as a Braille display.

NOTE: Once you set up connection between macOS and your Seika v5, the macOS will record this device. In the future maybe you meet connection problem between macOS and your Seika v5, don't worry about it. You should find this device which named TS5 ** (which means the Bluetooth serial number of this Seika v5) in the Braille-Select braille display list, then click it, and you need select "Ignore this device" item to remove this Seika v5 from macOS record. After that,**

you should repeat the set up connection steps as above.

4. Navigation keys and commands

Note: When using Seika v5 in VoiceOver (Aside), you can use the following key commands to navigate.

Common Braille Commands for VoiceOver (Aside) Navigation:

Braille device keys	VoiceOver action
Router	Double-tap the selected item
Status Router	Toggle expanded status description
K1	Pan braille to the left
K8	Pan braille to the right
K2	Move to previous item
K3	Move to next item
K4	Activates the Back button if present
K5	Goes to the status bar
K6	Move to previous item using rotor setting
K7	Move to next item using rotor setting

Chapter 11 - Read USB Flash Disk (only for Seika v5)



[Caution]: The following instructions are very important:

- Seika v5 can read BSE, BRL, BRF files. It can support below Braille table: USA, France, Italian, English, Arabic, Hrvatski, Deutsch.
- Please confirm the files are in the root folder of your flash disk, and the file name is not more than eight letters.

NOTE: It may be a little bit slow when you browse files name and read files in some brand USB flash disks.

1. Quick Start

- Make sure Seika v5 is not connected with your computer through USB cable (you can connect adapter for charging), and turn on Seika v5.
- Plug the USB flash disk in the Seika v5.
- Press K1 + K5 to enter the USB flash disk reading mode.
- The first file name in the USB flash disk root folder will be displayed.
- Press K6/K7 or K1/K8 to scroll the file list.
- Press K5 button to open the current file.
- Press K6/K7 or K1/K8 to scroll the Braille line.
- Press K1 + K4 to go back to the file list.
- Press K1 + K4 again or pull the USB flash disk out will exit USB Flash disk reading mode.

2. Control keys

2.1. File Selection

When you plug in the flash disk and press K1 + K5, you will enter the flash disk reading mode, and the first file name will be displayed.

K6 or K1: Find the previous file name.

K7 or K8: Find the next file name.

K4: List the first file name in the USB disk.

K5: Open the file and start read the file.

K2: Move up ten files.

K3: Move down ten files.

NOTE:

"File list Top!" / "File list Bottom!" will be displayed if it reaches the top/bottom of the file list.

2.2. File Reading

K2: previous page.

K3: next page.

K6 or K1: previous line.

K7 or K8: next line.

K1 + K4: go back to the file list.

K1 + K8: 8-Dot/6-Dot Toggle

NOTE:

"This is the last line!" will be displayed if it reaches the end of the document.

2.3 check battery level

You can press K1+K2 to check the battery level (NOTE: you can check battery level of Seika v5 only when Seika v5 DOES NOT connect with Screen reader)

2.4 Quit

In order to quit file reading mode, press K1 + K4 twice (when you are reading the file) or only once (when you are in the file selection list). You can also pull out the flash disk to quit flash disk reading mode. After you quit the flash disk reading mode, the following message will be displayed:

"quit the flash disk mode".

3. Beeps Alarm

- If Seika v5 is powered by battery, it will beep once when Seika v5 is switched on.
- If Seika v5 is powered by adapter or computer, it will beep twice when Seika v5 is switched on.
- It will beep one low tone and one high tone when Seika v5 enter the USB flash disk reading mode.
- It will beep one high tone and one low tone when you pull USB flash disk out or Seika v5 exit the USB flash disk reading mode.
- It will beep three times when Seika v5 shuts down automatically (no operation within one hour).
- If you connect USB cable with Seika v5, it will beep two high tones.
- If you disconnect USB cable, it will beep two low tones.
- It will alarm three steps down tone every ten minutes if the Seika v5 battery level is low.
- If the battery is fully charged, it will beep three steps up tone.

4. Sleep mode

The Seika v5 will sleep if there is not any operation within one minute in default. You could wake up the Seika v5 by press any button or activate your screen reader. You can press K2+K3+K8 to set sleep time. Press K1 or K8 to select among 5 min, 10 min, 30 min sleep time, and then press K5 to confirm.

The Seika v5 will shut down automatically if there is not any operation within one hour. The only way is to restart Seika v5 to make it work.

NOTE: please turn off the Seika v5 if you do not use it.

Q&A

1. How to verify which Virtual COM port has been used by Seika Braille Display

- Run "Detect Seika COM Port V1.0.exe" in the "tool" folder in the CD.
- Seika COM port number will be displayed.

2. How to uninstall the Seika Braille display driver

Open the "Add or Remove Programs" in your Windows operation system, select and remove the item "Silicon Laboratories CP210x USB to UART Bridge"

NOTE: For the old version of Seika driver, select and remove the item according to the following different Windows operation system.

XP: "CP210x USB to UART Bridge Controller"

Win7 32/64bit: "Seika Braille Display System Driver (Driver Removal)"

Vista 32/64bit: "Seika Braille Display (Driver Removal)"

Win10 32/64bit: "Silicon Laboratories Inc. Port"

3. Braille display doesn't work

If the Seika Braille display doesn't work, please check Seika Braille display driver and also the screen reader setting.

3.1 Check Seika Braille display driver

- Right click the icon of "My Computer" on desktop, and select "Properties".
- Select "Hardware" on the top menu, and click the button "Device Manager".

If there is a yellow interrogation marks before both the item "Other Device" and its subdirectory "Silicon Labs CP210x USB to UART Bridge" in the catalog, it would mean that Seika Braille display driver doesn't work. It is necessary to reinstall the driver.

- Right click "Silicon Labs CP210x USB to UART Bridge", and select "uninstall".

- Install the Seika Braille display driver again (refer to Chapter 3).

3.2 Check the screen reader configuration

Run the "Detect Seika COM Port V1.0.exe" in the "tool" folder in the CD; remember the Seika COM port number. Check the COM port setting in your screen reader.